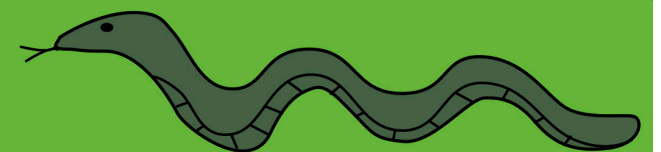
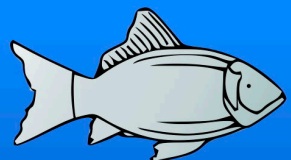
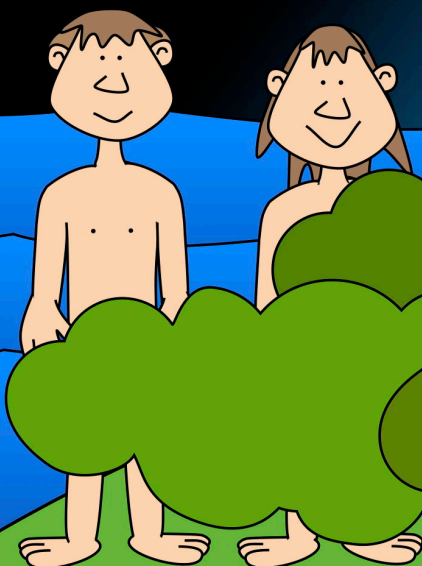


OVERVIEW OF THE BIBLE

Creation

Noah &
The Flood

The Fall



A Kingdom is Founded

The No



Abraham



The Twelve Tribes



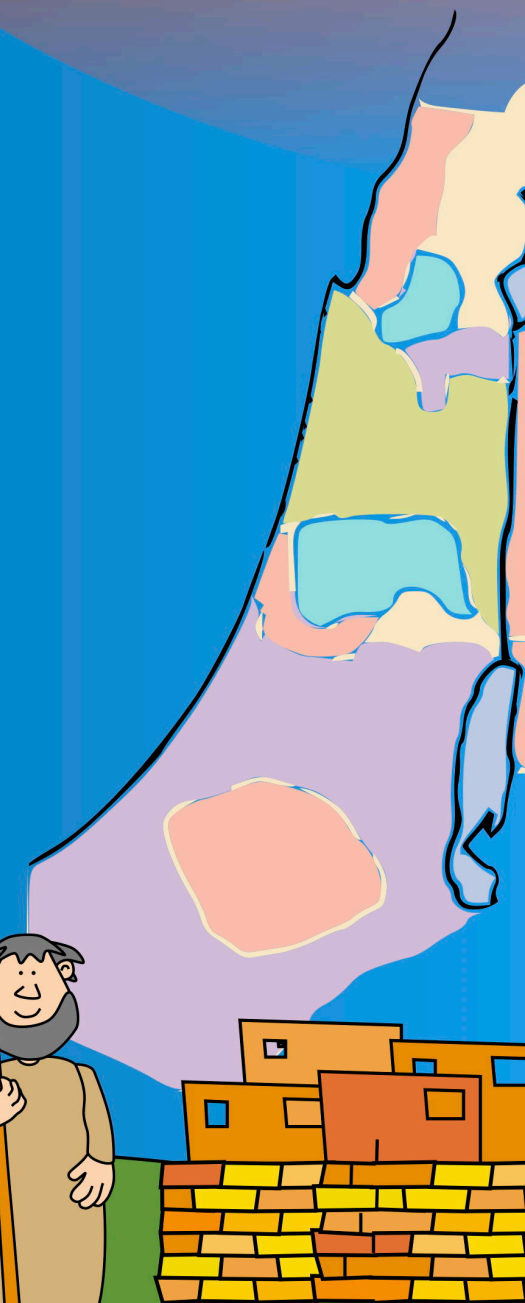
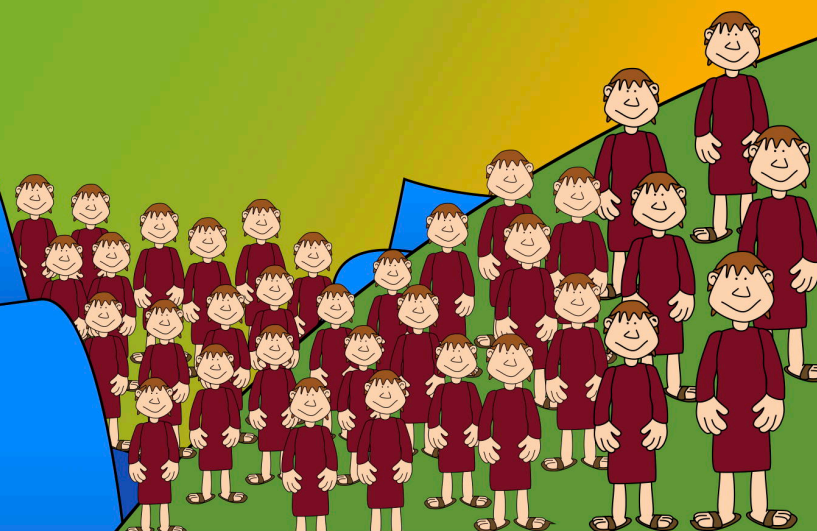
Joseph



Moses



Joshua &
Promised L



ation of Israel

The Voice of the Prophets



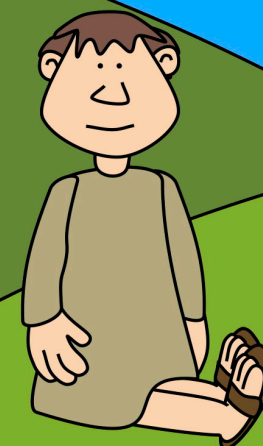
Judges



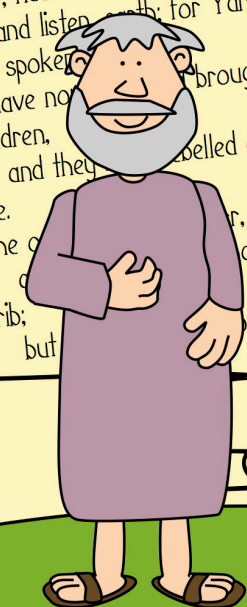
Kings



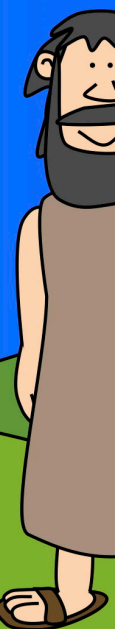
David



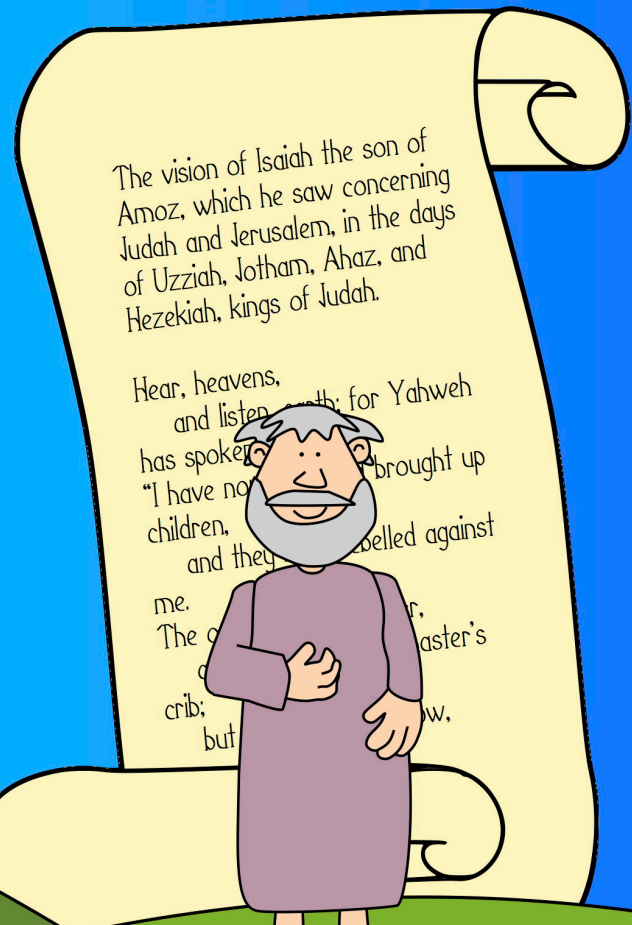
Jonah



Isaiah



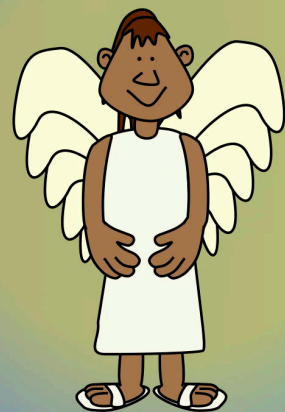
Elij



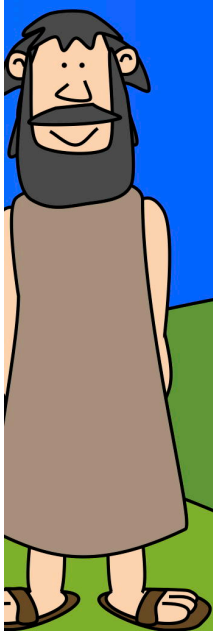
& the
Land

The Life of Jesus

Waiting
for the
Messiah



Teaching



John the Baptist

Jesus is
Born



John
the Baptist



The Disciples

SUS

God's Redemption Plan

Ascension

Praying

Crucifixion

Arrest

Healing
People

Resurrection

Miracles

Disciples

Plan

ension

The Church

New Heart
& New Earth



Pentecost



The Early
Church

aven Earth

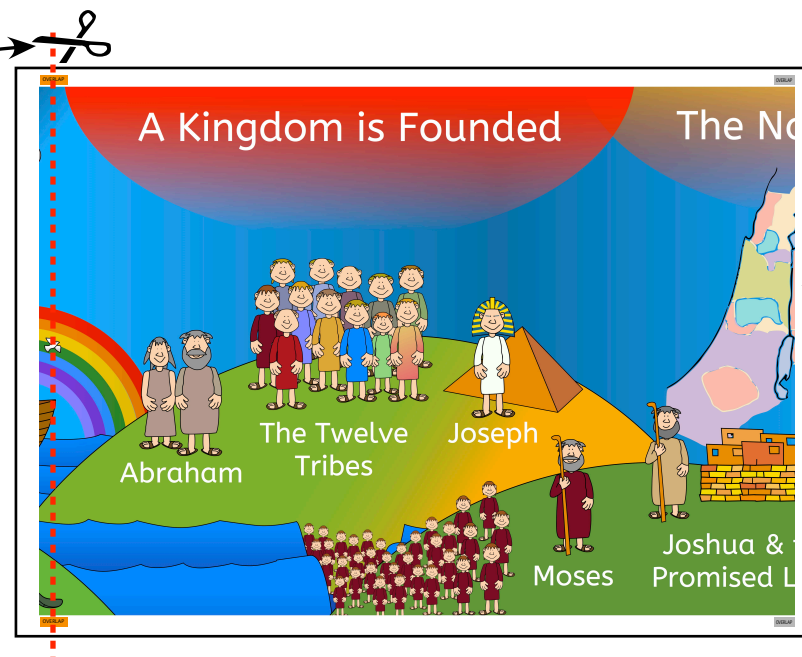


Putting together the Printable Bible Quest Timeline

request.org.uk

1. Print all of the pages in this PDF document. There should be 7 pages in total. The pages can be printed on to A4 or A3 paper. On A4 paper, the timeline is approximately 1.7m wide. On A3 paper, it is approximately 2.4m wide.
2. Cut down in a line between the **Orange** boxes labelled 'OVERLAP' on pages 2 to 7. Do not cut on the end of the sheet with the **Grey** boxes.

Cut in a line
down between
the two Orange
boxes



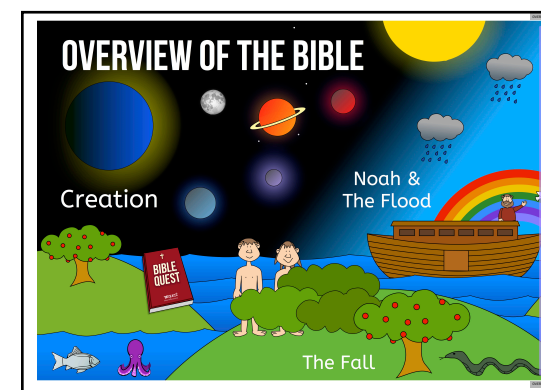
Don't cut this
end. Instead,
apply glue
along this edge.

3. On the end with the **Grey** boxes, apply a line of glue. Stick the pages together so that the cut **Orange** edge is on top of the **Grey** edge. Care should be taken to align the pages so that the timeline appears as one continuous sheet.



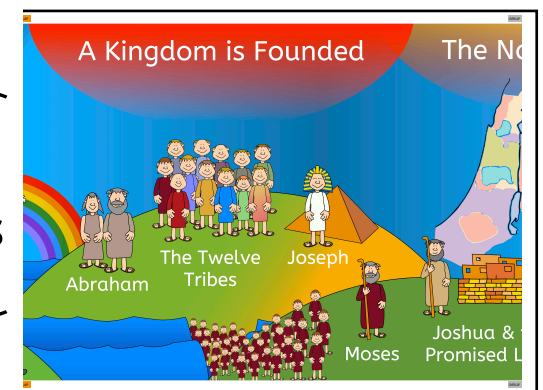
4. Cut off these instructions from the end of page 7.

www.**Request**.org.uk



Beneath

Glue
edges



On Top